

Sophos Firewall



Powerful Protection and Performance

Sophos Firewall and the XGS Series appliances with dedicated Xstream Flow Processors provide the ultimate in SaaS, SD-WAN, and cloud application acceleration, high-performance TLS inspection, and powerful threat protection for the most demanding networks.

Xstream Protection

Sophos Firewall's Xstream Architecture protects your network from the latest threats while accelerating your important SaaS, SD-WAN, and cloud application traffic.

TLS 1.3 Inspection

Remove an enormous blind spot with intelligent TLS inspection that's fast and effective, supporting the latest standards with extensive exceptions and point-and-click policy tools to strike the perfect balance of performance, privacy, and protection.

Deep Packet Inspection

Stop the latest hacks and attacks dead in their tracks with high performance streaming deep packet inspection, including next-gen IPS, web protection, and app control, as well as deep learning and sandboxing powered by SophosLabs Intelix.

Application Acceleration

Accelerate your trusted SaaS, SD-WAN, and cloud traffic such as VoIP, video, and other mission critical applications automatically or via your own policies. Put them on the FastPath through the Xstream Flow Processor to optimize performance and increase headroom for traffic that needs deeper inspection.

Synchronized Security

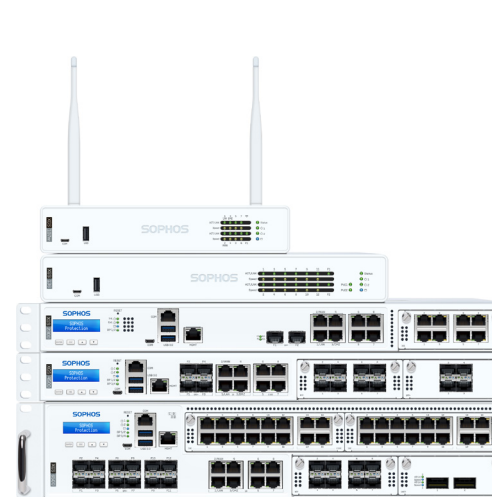
Sophos Firewall is unique in the industry, closely integrating with Sophos Endpoint Protection to share information and automatically respond to incidents via Security Heartbeat™. You get at-a-glance health status for all your endpoints and if there's an active threat, Sophos Firewall will coordinate an automatic response to isolate it — preventing lateral movement. Security Heartbeat™ also shares user and application identification with the firewall to improve application discovery, policy compliance, performance and routing.

Sophos Central Management and Reporting

Sophos Central is the ultimate cybersecurity cloud management platform – and it's free and easy. Manage all your firewalls with group policy tools and perform backup management, firmware update scheduling, and zero-touch deployment from the cloud. Plus, take advantage of powerful cloud-based reporting tools to get deeper insight into your network activity.

Highlights

- ▶ The world's best visibility, protection, and response
- ▶ Flexible deployment: hardware, cloud, virtual, software
- ▶ Integrates with the entire Sophos ecosystem of cybersecurity solutions
- ▶ Unique Synchronized Security with Security Heartbeat™
- ▶ Sophos Central cloud management at no extra charge
- ▶ Rich on-box and cloud-based reporting included
- ▶ Modular connectivity and SD-WAN options



SOPHOS

Sophos Firewall XGS Series Appliances

Every XGS Series appliance offers the best of both worlds: a high-performance multi-core CPU powering TLS encryption and deep-packet inspection, and a dedicated Xstream Flow Processor for intelligent acceleration of real-time traffic like VoIP, video, and other trusted applications. The result: Xstream performance at every price point to power the protection you need for today's diverse, distributed, and encrypted networks.

Model		Tech. Specs			Throughput			
Model	Form Factor	Ports/Slots (Max Ports)	w-model*	Swappable Components	Firewall (Mbps)	IPsec VPN (Mbps)	Threat Protection (Mbps)	Xstream SSL/TLS (Mbps)
XGS 87(w)	Desktop	5/- (5)	Wi-Fi 5	n/a	3,700	-	240	375
XGS 107(w)	Desktop	9/- (9)	Wi-Fi 5	Second power supply	7,000	-	330	420
XGS 116(w)	Desktop	9/1 (9)	Wi-Fi 5	Second power supply, 3G/4G, Wi-Fi**	7,700	-	685	650
XGS 126(w)	Desktop	14/1 (14)	Wi-Fi 5	Second power supply, 3G/4G, Wi-Fi**	10,500	-	900	800
XGS 136(w)	Desktop	14/1 (14)	Wi-Fi 5	Second power supply, 3G/4G, Wi-Fi**	11,500	-	1,000	950
XGS 2100	1U	10/1 (18)	n/a	Optional external power	30,000	-	1,250	1,100
XGS 2300	1U	10/1 (18)	n/a	Optional external power	35,000	-	1,400	1,450
XGS 3100	1U	12/1 (20)	n/a	Optional external power	38,000	-	2,000	2,470
XGS 3300	1U	12/1 (20)	n/a	Optional external power	40,000	-	2,770	3,130
XGS 4300	1U	12/2 (28)	n/a	Optional external power	75,000	-	4,800	8,000
XGS 4500	1U	12/2 (28)	n/a	Optional internal power	80,000	-	8,390	10,600
XGS 5500	2U	16/3 (48)	n/a	Power, SSD, Fan	100,000	-	12,390	13,500
XGS 6500	2U	20/4 (68)	n/a	Power, SSD, Fan	115,000	-	17,050	16,000

* 802.11ac Wave 2

** 2nd Wi-Fi module option for XGS 116w, 126w and 136w only

Xstream Protection Bundle

Sophos Firewall's Xstream Protection Bundle provides all the next-gen protection, performance, and value you need to power the most demanding network.

Xstream Protection Bundle

BASE LICENSE	Networking, wireless, Xstream architecture, unlimited remote access VPN, site-to-site VPN, reporting
NETWORK PROTECTION	Xstream TLS and DPI engine, IPS, ATP, Security Heartbeat™, SD-RED VPN, reporting
WEB PROTECTION	Xstream TLS and DPI engine, web security and control, application control, reporting
ZERO-DAY PROTECTION	Machine learning and sandboxing file analysis, reporting
CENTRAL ORCHESTRATION***	SD-WAN VPN orchestration, Central Firewall Reporting Advanced (30-days), MTR/XDR-ready
ENHANCED SUPPORT	24/7 support, feature updates, advanced replacement hardware warranty for term

*** Expected soon

For Performance Testing methodology see sophos.com/compare-xgs

United Kingdom and Worldwide Sales
Tel: +44 (0)8447 671131
Email: sales@sophos.com

North American Sales
Toll Free: 1-866-866-2802
Email: nasales@sophos.com

Australia and New Zealand Sales
Tel: +61 2 9409 9100
Email: sales@sophos.com.au

Asia Sales
Tel: +65 62244168
Email: salesasia@sophos.com